

# Using ABS-3 Airbrush System



The ABS-3 Set Includes:



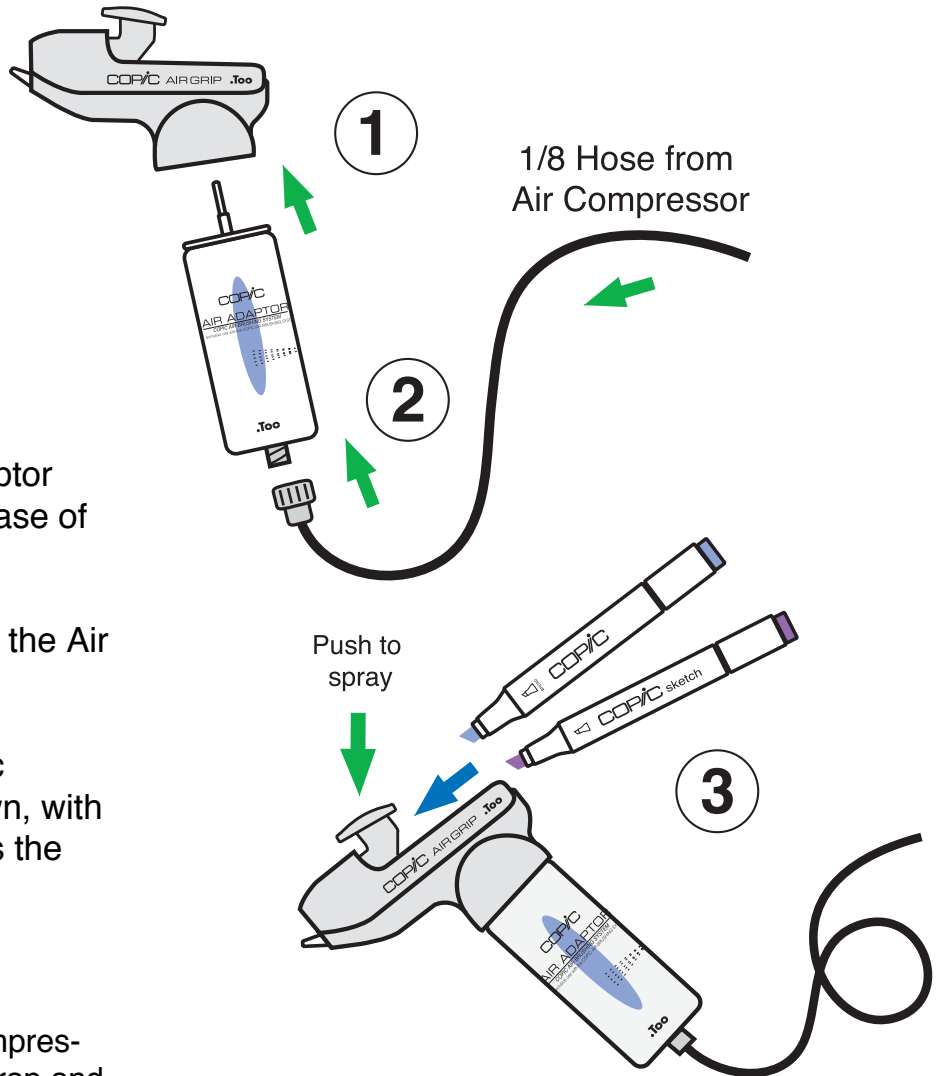
Air Grip

Air Adaptor


1. Remove the cap from the Air Adaptor and screw the Air Adaptor into the base of the Air Grip.

2. Attach the Air Hose to the base of the Air Adaptor.

3. Insert your favorite Copic or Copic Sketch pen into the Air Grip as shown, with the broad nib pointing up, then press the finger pad trigger to spray.



\*Copic carries the Sparmax Mini Air Compressor- an oil-less compressor with water trap and pressure gauge. Approx. weight 8lbs. Included is an air hose of the correct size. *You can order from Copic the Sparmax Mini Air Compressor or connect the air hose for your existing compressor if the hose is not compatible.*



**COPIC Airbrush System Warning**

- Use in an area with good air circulation. If using in an area of poor ventilation, use a facemask.
- Copic Markers are alcohol based, keep away from open flame.
- Do not spray on people or animals.
- Air Cans are under pressure- do not puncture.

\*Sparmax Air Compressor w/ Airbrush Attachment



For questions or comments contact us at Imagination International, Inc. Copic Markers (541) 684-0013, or at [www.copicmarker.com](http://www.copicmarker.com)  
 Copyright © 2010 Imagination International, Inc. All Rights Reserved

