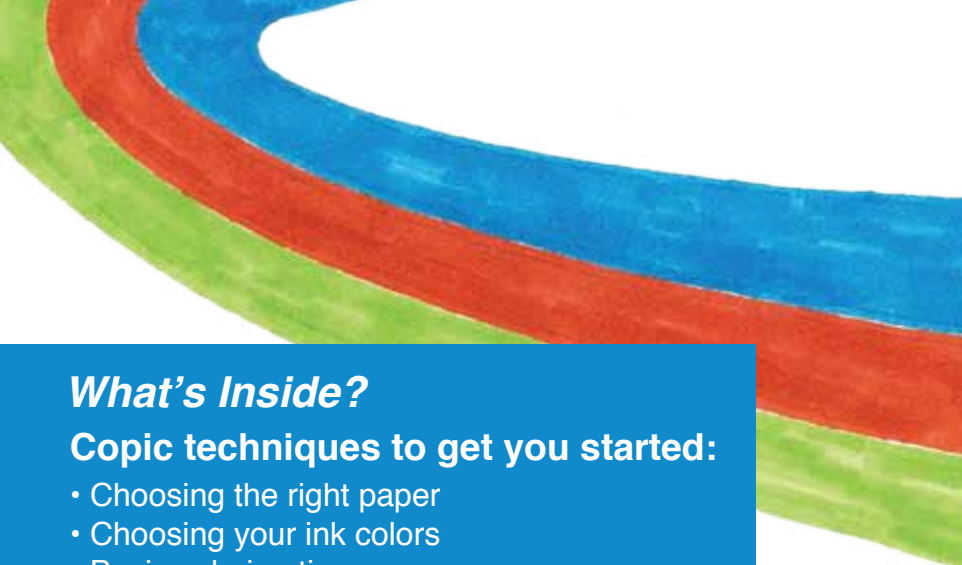


COPIC MARKERS TECHNIQUES



What's Inside?

Copic techniques to get you started:

- Choosing the right paper
- Choosing your ink colors
- Basic coloring tips
- Blending tips
- Special effects
- Other neat stuff

Marker Features At a Glance

Four different styles to choose from, all filled with our dynamic Copic alcohol inks.

COPIC	Sketch	Ciao	Wide	
X	X	X		Double ended
X	X	X	X	Refillable
X	X	X	X	Replacement nibs
X	X	X	X	Optional nibs
X	X			Airbrush compatible
X	X		X	Empty markers
X				Broad nib
X				Fine nib
	X	X		Super brush nib
	X	X		Medium broad nib
			X	21mm wide nib
X	X	X	X	Dries acid free*
214	346	180	36	Colors available

* On some papers a trace residue of alcohol may remain.

Now you can keep track of your marker collection online, upload artwork and build color palettes based on Copic's color collection. Check it out for free at copiccolor.com.



Check out these great instructional tools from Copic. For more products and information, visit copicmarker.com.

DVDs



Shadows & Shading
A beginners guide
item # SHADBOOK

Darstellungs-technik
German product design
item # GERDES

Books



Multiliner SP Comic Inking & Illustration Techniques
item # CMCSPPVD

Sketch Markers Techniques & Projects
item # SDVD1

Product Design Renderings Vol. 2
item # PDRDVD2 (Not Shown)
item # PDRDVD1

Copic Airbrush Papercrafting
item # ABSDVD1

Copic Airbrush Landscape Architecture
item # ABSDVD1

Copic Airbrush Comic Illustration
item # ABSDVD1

For more products and information visit copicmarker.com



Choosing the right paper



Manga Illustration Paper (Pure White) - Thin, won't bleed. Good for inking and marker coloring.



Manga Illustration Paper - Thick paper for inking and coloring. Will bleed.



Blending Card - Thick paper, bright white. Some bleed. Great for smooth blending.



Stamping Paper - Medium weight, warm tone, great for inking and coloring. Some bleed.

Other paper options

Alcohol Marker Pad - Thin, coated, good for tracing, no bleed. Not ideal for special effects.

Copic Sketchbook - Thick paper, great for mixed media, pencils, inking and coloring. Will bleed.

PM Pad - Thin, coated, no bleed. Good for pastels, or colored pencils and marker.

Choosing your ink colors

Inking Pens

Copic Markers contain an alcohol-based dye and work best with pigment ink pens. The Copic Multiliner and Multiliner SP Pens are water-based pigment pens, designed specifically to be compatible with Copic Marker ink. Allow inked lines to dry thoroughly before coloring. Drying times vary.

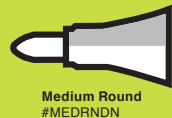
Stamping Ink

Each stamping ink manufacturer uses unique pigments and dyes in their stamp pads, so test each brand carefully. Memento, Ranger Distress, and Palette Noir all work well without heat setting. Some brands, like Brilliance, work well after they are heat set. Avoid solvent based inks like Staz-On.



Nibs

Many people enjoy coloring with the flexible brush end of Sketch or Ciao markers. If you prefer a firm tip, you can replace either end of these markers with an optional Medium Round nib.



Medium Round
#MEDRNDN

BASIC COLORING PROCESS TIPS

- Markers bleed through most papers, so always color over clean scratch paper or another absorbent surface.

- Let all your lines or ink work completely dry before coloring with markers. On some papers this may take a while.

- For clean, smooth areas, color slowly in circles to saturate the paper. Make sure all your edges stay "wet". This helps to avoid streaking.

- Work with the lightest colors you need first, building towards your darkest colors. (More about this in Blending Tips)

- Avoid coloring over large, densely inked areas, as this may cause your line work to bleed or smear.

- If you have a very large area, soak it first with the blender marker. While the paper is still damp, add your marker over the top. This will smooth your colors together better.

Blending tips

Basic Blending - Marker on Paper

Color evenly with a lighter color then add the darker color over it. Where the two colors meet, go over it again with the lighter color, working the two shades together.



Feathering

1. Using the brush on a Sketch or Ciao, color from one edge of a shape, lifting at the end of each stroke to leave white on the other side.
2. Feather in the next color from the opposite direction.
3. Repeat with each color a couple of times until your desired blend is achieved.

Nib to Nib

For small areas, touch one marker directly to the tip of another marker. You can also get a dark to white effect by adding your color directly to a blender marker, then coloring.



Palette blending

On a piece of plastic, draw a spot of color. Using the color you want to blend with it, touch the marker nib to the spot, picking up the color, and apply it like a paintbrush.

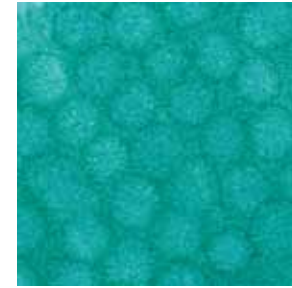
Colorless Blender

Colorless Blender ink is made of the same alcohol base as all Copic markers. Blender ink will move color on most uncoated papers or vellum.

Perfect for:

Adding highlights: Use the colorless blender to add light tones back into a dark image.

Lighten/fade an area: Make an image look faded or weathered by pushing darker colors away from the center.



Blender Effects:

To create a brick pattern, carefully press the chisel nib of your Colorless Blender marker to a colored area and repeat. For a dotted or pebbled pattern, press the fine or brush nib to a colored area.

MORE



Touching up with Blender: If you color outside the lines, carefully push the color back in with a Colorless Blender marker. Let dry and repeat to make the area lighter.

Mixed Media

Glossy Paper

You can drip Copic Inks onto glossy paper to achieve interesting background effects. Glossy paper keeps the alcohol ink wet longer, and allows time to move and mix colors. Colorless blender is non-toxic and can be sprayed onto your work to thin colors and create textures. Copic markers also work well on vellum and tracing paper.

Paints and Colored Pencils

You can use Copic markers underneath most mediums. Care needs to be taken when working on top of paint and pencils, as marker nibs may clog. Always test your markers when using with other media.

Non-Porous Surfaces

When using Copic markers and inks on non-porous surfaces you may notice a slight tackiness when the ink is dry. This is normal, especially on dark or dense colors. To protect your surface from damage, seal your work with a water-based UV sealant.